

LNL-8000

Star Multiplexer

Product Overview

The Star Multiplexer from Lenel is designed to implement star topology on a downstream port of any Lenel Intelligent System Controller or on any host communication port of any OnGuard server. Up to eight RS-485 (2-wire) connections or four RS-485 (4-wire) connections can be made downstream of the LNL-8000. The Lenel Star Multiplexer requires 12 VDC for power. It allows communication protocol conversion, and provides connection with alternate communication devices to extend effective distances.

The master or host interface can use either RS-232 or RS-485 (2-wire) communication. The Lenel Star Multiplexer interfaces upstream with the Lenel ISC, and downstream with one of many Lenel RS-485 products (including the LNL-1100 Input Control Module, LNL-1200 Output Control Module, LNL-1300 Single Reader Interface Module, LNL-1320 Dual Reader Interface Module and LNL-500A, LNL-500B, or LNL-500W Gateway Interface Modules) on each downstream port (ports 2-9). A maximum of eight (8) devices are allowed per downstream port.

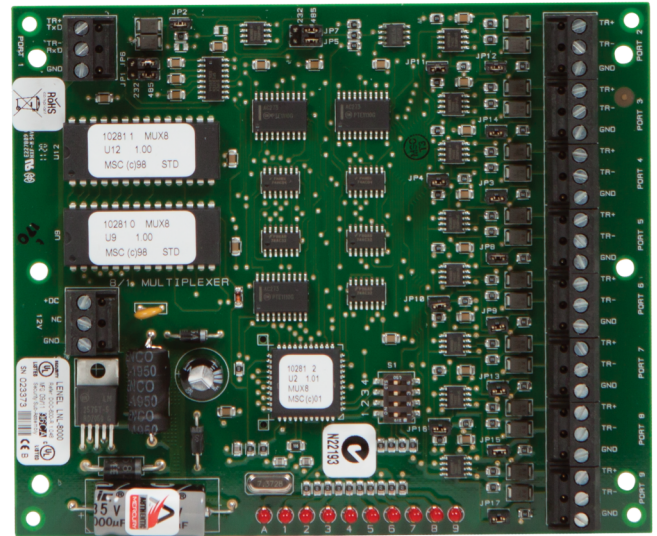
Mechanical and Architectural Characteristics and Wiring

Requirements

The acceptable power supply is 12 VDC. Locate the power source as close as possible to the LNL-8000. Use a minimum of 18 AWG (one twisted pair) wiring for the power supply.

Communications

Communication with the Intelligent System Controller is via a 2-wire or 4-wire RS-485 interface. The interface allows multidrop communication on a single ISC port, up to 4,000 feet (1219 m) away per port. It also can be used to convert a single RS-232 communication port to a multidrop RS-485 port. Use twisted pair(s) with a minimum of 24 AWG and a shield for communication. The 2-wire or 4-wire communications with end-of-line termination are jumper-selectable.



Details

- Host communications - 38.4 Kbps direct wire (RS-232/RS-485 multidropped)
- 12 VDC input power
- Status LEDs for heartbeat, upstream and downstream communication
- Support for either 2-wire or 4-wire RS-485 topologies
- RS-485 on-board termination is jumper selectable
- Can be used for retrofit and new wiring configurations

LNL-8000

Star Multiplexer

Technical specifications

System

Controller type	Communication Module
Software compatibility	OnGuard
PCB only	Yes
LCD intrusion keypad	No

Communication

Bus interface	RS232, RS485
---------------	--------------

Electrical

Operating voltage	12 V
Power supply type	VDC
Current consumption	250 mA

Physical

Physical dimensions	51 x 191 x 64 mm
Net weight	170 g
Shipping weight	180 g

Environmental

Operating temperature	0 to +70°C
Storage temperature	-55 to +85°C
Relative humidity	0 to 95% noncondensing

Standards & regulation

Compliance	CE, FCC, RoHS
------------	---------------