

ComNet™ eConsole is a powerful Network Management Software suite including three powerful applications that can meet various demands for network monitoring and management in a wide range of industrial applications. Utilizing three key functions - Centralized Management / Visualized Management / Device Monitoring - the eConsole suite provides advanced monitoring features and various warning systems, users can be informed of any accidental situations in the local network and recover the network immediately.

FEATURES

Centralized Management

Configure all ComNet Ethernet switches in the network at once in a few steps using powerful application wizards: IP Setting Wizard, Firmware Upgrade Wizard, and Redundant Ring (C-Ring) Group Wizard. Compatible managed switches no longer require individual configuration.

Visualized Management

ComNet's Topology View (eVision) can display the complex topologies of ComNet's Ethernet switches in the local network. Different switches can be grouped by different IPs and in different topology windows. The health status of the connections will be shown as different colors for quick visual reference. ComNet Topology View helps the administrators to do the management visually, intuitively, and more efficiently.

Device Monitoring

eConsole has various mechanisms to monitor ComNet switches, including an event log, and SNMP traps. Administrators will be informed of any abnormal events, and the event log can be exported as an Excel file. The configuration of ComNet switches can be saved and the configurations of all switches in local network can be scanned regularly to detect any changes to the configurations. Administrators can be made aware of any unexpected changes to the configurations of the switches. ComNet Host Monitor (eMonitor) can automatically ping and check the health statuses of connections among all IP-based devices in the local area network. Host Monitor also features IP categorized function, and all IP-based devices can be monitored in groups of different IPs.

- › Using the various monitoring mechanisms, admins can be notified at a very early stage if any failure occurs in the network.
- › Device configuration scan
- › IP setting group wizard, firmware upgrade group wizard, and redundant ring (C-Ring) setting wizard
- › Status Monitoring and Alarm
- › Network analysis function
- › Draw the whole network topology automatically plus available path management
- › Devices can be grouped and managed by different IP ranges
- › ComNet Map technology can show network device locations using Google Map Data
- › The health status of connections are automatically checked
- › IP scan for detection of ComNet switches in the local network
- › Free version supports 50 switches or upgrade to a licensed version to support up to 500 switch statuses.

SOFTWARE SPECIFICATIONS

eVision

- The topology views show the topology of connections among all of the switches in the local network.
- IP categorized function
- Configure the switches into different IP domains
- Visualized warning system of the health statuses of the connections among the switches
- Traffic flow analysis of each node
- Event log that can be exported as an Excel file.
- The administrator can plan the future topology manually in "Edit" operation mode.
- ComNet Map displays topology of connections using Google Map Data:

- Automatic Device Discovery
- Device Status Monitoring
- Syslog events
- Scan Device Configuration

eCommander

- Automatic device discovery
- Device status monitoring
- Syslog events
- Scan device configuration
- IP setting Group Wizard, Firmware Upgrade Group Wizard, and Redundant Ring (C-Ring) Group Wizard

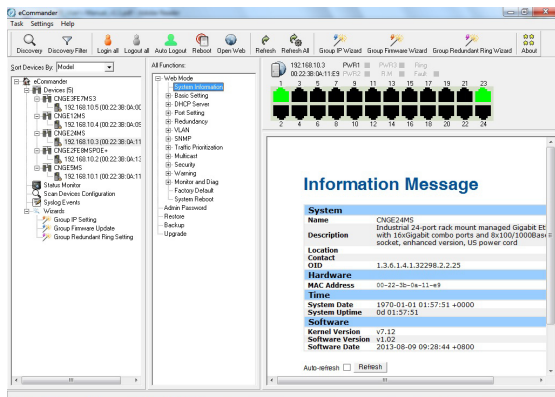
eMonitor

- IP scan to detect all of the IP-based devices in the local network.
- To check the health statuses of connections of all IP-based devices
- All of IP-based devices can be grouped and managed by different IP ranges.

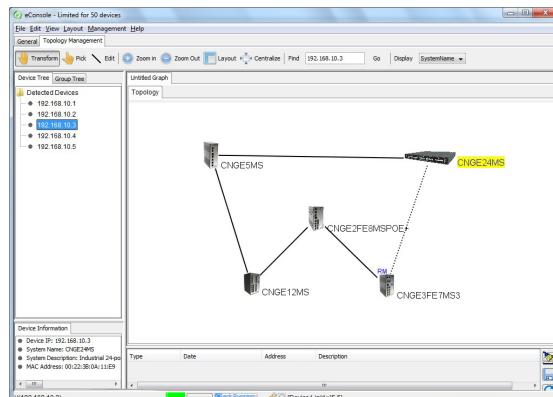
System Requirements

- Operating System: Windows 2000/2003/XP/Vista/7
- Browser: Internet Explorer 6.0 Service Pack V1 or Higher
- CPU: Intel Core 2 Duo 2.4 GHz minimum specs
- RAM: 1GB minimum
- Hard Disk Space: 1GB minimum

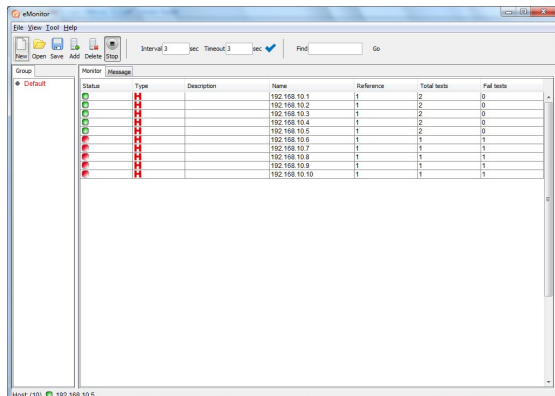
SCREEN SHOTS



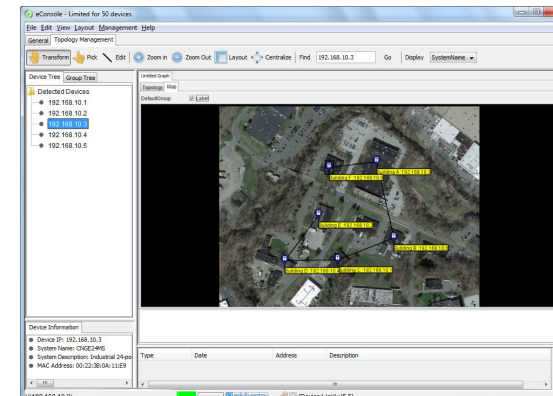
eCommander



eVision Topology View



eMonitor



eVision Map View

Note: Some features are version and switch model dependent.

COMNET ETHERNET SWITCH COMPATIBILITY

Category	Switch Model Number	eConsole Application		
		eCommander	eVision	eMonitor
ValueLine	CWFE8TX8MS	-	-	•
	CWFE8MS/DIN	-	-	•
	CWGE9MS	-	•	•
	CWGE2FE8MSPOE	-	•	•
	CWGE2FE24MODMS	-	•	•
	CWGE24MS	•	•	•
	CWGE24MODMS	-	•	•
	CWGE26FX2TX24MSPOE	•	•	•
	CWGE28FX4TX24MS	•	•	•
Industrial	CNGE2+2SMS[POE][HO]	-	•	•
	CNGE5MS	•	•	•
	CNGE2FE8MSPOE	-	•	•
	CNGE2FE8MSPOE2	•	•	•
	CNGE2FE8MSPOE+	•	•	•
	CNGE2FE16MS	-	•	•
	CNGE3FE7MS2	-	•	•
	CNGE3FE7MS3	•	•	•
	CNGE8FX4TX4MS	-	•	•
	CNGE8MS	•	•	•
	CNGE12MS	•	•	•
	CNGE20MS	•	•	•
	CNGE2FE24MS	-	•	•
	CNGE2FE24MSPOE	-	•	•
	CNGE24MS	•	•	•
	CNGE28FX4TX24MS	•	•	•
	CNGE28FX4TX24MSPOE	•	•	•
	Substation	CNGE3FE7MS4	•	•

ORDERING INFORMATION

Part Number	Description
eConsole	Powerful Network Management Windows Utility Suite for up to 50 ComNet Switches
eConsole100	Powerful Network Management Windows Utility Suite for up to 100 ComNet Switches
eConsole250	Powerful Network Management Windows Utility Suite for up to 250 ComNet Switches
eConsole500	Powerful Network Management Windows Utility Suite for up to 500 ComNet Switches
Included in Box	eConsole Installation CD USB License Key (100, 250 and 500 Switch Versions only)

In a continuing effort to improve and advance technology, product specifications are subject to change without notice.
For installations involving more than 500 switches, please contact the factory to discuss licensing.