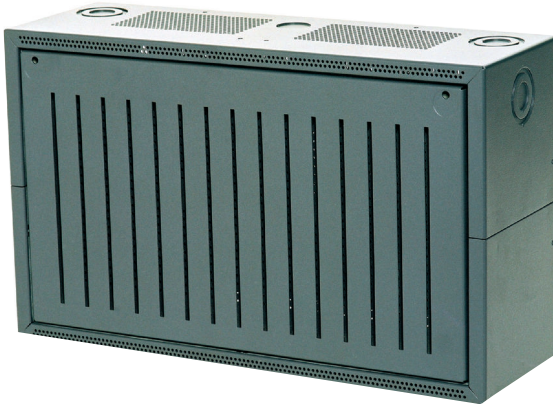


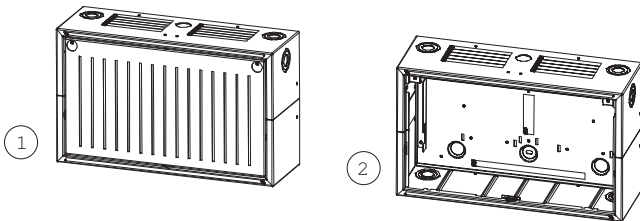


PSS 0002 A Power Supply Small



The PSS 0002 A is a Power Supply housing that can be flexibly equipped.

System Overview



Pos. Description

- 1 Housing
- 2 Housing without front panel

Parts Included

- | Pos. | Description |
|------|-------------|
| 1 | Housing |

Ordering Information

PSS 0002 A Power Supply Small for surface-mounting, flush-mounting or installation in 482.6 mm (19") racks	PSS 0002 A
--	-------------------

Installation/Configuration Notes

- Equipment variants:
 - 2 x 12 V/28 Ah batteries and 1 Power Supply FPO-5000-PSB1 between the batteries
 - 1 HMP 0002 A Mounting Plate Long for individual equipping.

Note With the HMP 0002 A Mounting Plate, the mounting bore holes for the components must be drilled on-site by the customer.

Americas:
Bosch Security Systems, Inc.
130 Perinton Parkway
Fairport, New York, 14450, USA
Phone: +1 800 289 0096
Fax: +1 585 223 9180
security.sales@us.bosch.com
www.boschsecurity.us

Europe, Middle East, Africa:
Bosch Security Systems B.V.
P.O. Box 80002
5600 JB Eindhoven, The Netherlands
Phone: + 31 40 2577 284
Fax: +31 40 2577 330
emea.securitysystems@bosch.com
www.boschsecurity.com

Asia-Pacific:
Robert Bosch (SEA) Pte Ltd, Security Systems
11 Bishan Street 21
Singapore 573943
Phone: +65 6258 5511
Fax: +65 6571 2698
apr.securitysystems@bosch.com
www.boschsecurity.com

Represented by