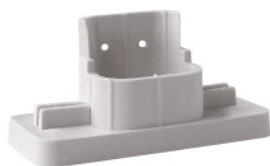


Mounting adapter for intermediate ceilings



Part-No. 805577

The mounting adapter is used for the quick and secure attachment of bases of the IQ8Quad detector series, 9x00, IQ8Alarm and alarm signaling devices, parallel detector indicators, etc. to suspended ceiling systems. It saves the usage of special hollow cavity fasteners, since the mounting screws of the bases are screwed directly into the slots of the mounting adapter. The mounting adapter offers additional advantages in the fixing of the cables, rigid/flexible cable inlays and threaded cable connections.

Material	ABS
Air humidity	< 95 %
Color	white, similar to RAL 9001
Dimensions	