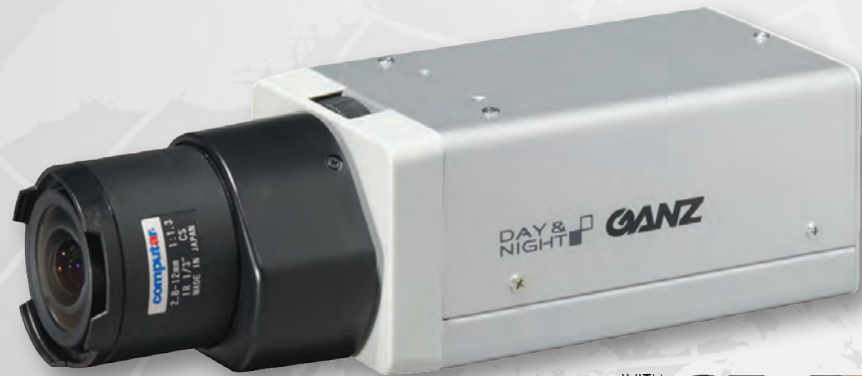


# 700 TVL Digital Day/Night Camera ZC-YX/NX270 Series



These high performance cameras feature Ganz GX5 technology, combining 700TVL, WDR performance, intelligent image enhancement and advanced OSD controls. These highly sensitive cameras are designed to deliver an unprecedented level of resolution, sensitivity and control for optimal video surveillance in all conditions and are a new addition to the well-known Ganz YC Series. The OSD menu provides multiple programming options and installation tools.

## Features:

- 700 TVL Super High Resolution
- 12,600x WDR (Wide Dynamic Range) on True WDR models
- Extremely High Sensitivity Day/Night modes
- Super Low Light Performance
- Automatically switches between preprogrammed profiles for best image results
- Smart Day/Night mode synchronizes with IR LED
- 2D/3D Digital Noise Reduction
- Test pattern output with color bar
- UL Listed

**GANZ**® SPECIFICATIONS

## SPECIFICATIONS

MODEL		ZC-YX270PE	ZC-YX270P	ZC-NXW270PR	ZC-NX270P	
Camera	WDR Performance	Digital WDR	True WDR		Digital WDR	
	Day/Night Performance	Digital Day/Night		True Day/Night		
	Scanning System	2:1 Interlace				
	Image Sensor	1/3"-type Interline transfer Color CCD				
	Effective Pixels	976 (H) x 494 (V)				
	Camera Resolution	700 TVL (For both Color & BW)				
	Minimum Illumination @ F1.2	Normal	0.02 lux (Color) 0.01 lux (B/W)	0.00008 lux (Color) 0.00004 lux (B/W)	0.02 lux (Color) 0.002 lux (B/W)	
		50 IRE, SENS UP	0.00004 lux (Color) 0.00002 lux (B/W)	0.00009 lux (Color) 0.00009 lux (B/W)	0.00004 lux (Color) 0.00004 lux (B/W)	
	S/N Ratio	More than 50dB (at minimum ACG gain)				
	Electronic Shutter	Electronic shutter ON: 1/50 s. to 1/100,000 s. * The shutter speed ranging from 1/1,000 s to 1/5,000 s, 1/50 sec. fixed (Flickerless: OFF), 1/120 sec. fixed (Flickerless: ON)				
	Gamma Correction	0.45				
	Sync. System	Internal synchronization (INT.) / Line Lock (L.L.)				
	Wide Dynamic Range (WDR)	-	Max 82dB, 12,600x	-		
	OSD FUNCTIONS	White Balance	ATW (Normal / Wide) / AWB / Manual			
Sens Up		ON: Auto (x2 to x512) / OFF				
2D/3D Digital Noise Reduction (2D/3D-DNR)		(2D/3D-DNR)Extreme / High / Middle / Low				
Electronic Zoom		ON (16 times max.) / OFF				
Defog Image Correction		Image correction ON / OFF				
Profile Settings		Basic / Enhanced / Casino / Sodium vapor lamp				
HLC		Detection level: Low / Middle / High				
Easy Focus		Enabled with indicator				
Monitor output mode		CRT / LCD				
Test Pattern		Color Bar, Resolution, Grayscale, Center Cross				
Other Functions		BLC, AGC, ALC, Privacy Mask, Motion Detection, Image Stabilizer, Flip/Rotate				
PHYSICAL / ADDITIONAL		Power Source	230VAC ± 10% (50 Hz ± 1 Hz)	24VAC ± 10% (50/60 Hz ± 1 Hz) or 12VDC ± 10%		
		Power Consumption	25mA	12VDC 310mA / 24VAC 250mA, 3.7W		
		Operating Temperature / Humidity	14° F ~ 122° F (-10° C ~ 50° C) / 85% humidity (non-condensing)			
	Storage Temperature / Humidity	-4° F ~ 140° F (-20° C ~ 60° C) / 95% humidity (non-condensing)				
	Dimensions	2.4" (W) x 2.1" (H) x 4.7" (D) / 60 mm (W) x 54 mm (H) x 119.4 mm (D)				
	Weight	600g	320g			
	Input/Output	Video out, Power in, Day/Night fix & profile trigger terminal				
	Certifications	CE, FCC, WEEE, UL				



Side View



Rear Panel View

## SUGGESTED **computer**® VARIFOCAL LENSES

\*Aspherical lens - improves the image quality  
\*\*Large aperture - transmits more light

Focal Length	Manual Iris	DC Auto Iris	Video Auto Iris	IR	F Stop	Angle of View (HOR)	Format	Mount
2.8-12mm	T4Z2813CS-IR	TG4Z2813FCS-IR	TG4Z2813AFCS-IR	√	1.3*	102.2° ~ 23.7°	1/3"	CS
2.9-8.2mm	T3Z2910CS	TG3Z2910FCS	TG3Z2910AFCS		1.0**	98.3° ~ 35.2°	1/3"	CS
2.9-8.2mm	T3Z2910CS-IR	TG3Z2910FCS-IR	TG3Z2910AFCS-IR	√	1.0**	98.3° ~ 35.2°	1/3"	CS
8.5-40mm	T5Z8513CS-IR	TG5Z8513FCS-IR	TG5Z8513AFCS-IR	√	1.3*	33.5° ~ 7.1°	1/3"	CS
5-50mm	T10Z0513CS	TG10Z0513FCS	TG10Z0513AFCS		1.3*	51.8° ~ 5.6°	1/3"	CS

\*Exact products and specifications shown may vary by geographic and subject to change without notice. Actual products may differ from the images appearing in the specification sheet.



**CBC Co.,Ltd.**

TOKYO Head Office Image and Information Technology Division  
**Ganz Global Brand Center** <http://www.ganz-global.com/>