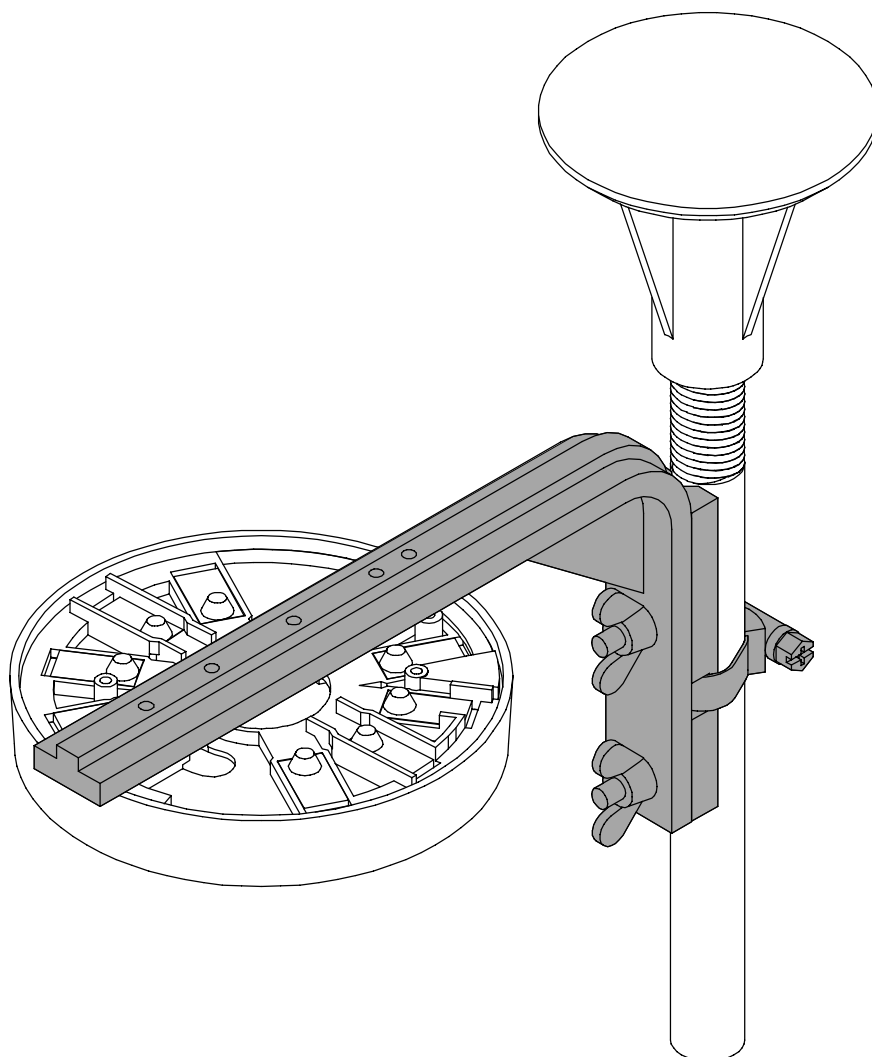


## Mounting bracket for fire detector



## Table of Contents

<b>1. Product Description</b> .....	<b>3</b>
<b>2. Features</b> .....	<b>4</b>
<b>3. Planning Notes</b> .....	<b>4</b>
<b>4. Order contents</b> .....	<b>4</b>
<b>5. Device layout</b> .....	<b>5</b>
<b>6. Mounting notes</b> .....	<b>5</b>
<b>7. Notes on maintenance and service</b> .....	<b>6</b>
7.1. Repair .....	6
7.2. Disposal .....	7
7.3. Additional documentation .....	7
<b>8. Technical specifications (without mounting clamps)</b> .	<b>7</b>
<b>9. Table of Abbreviations</b> .....	<b>7</b>

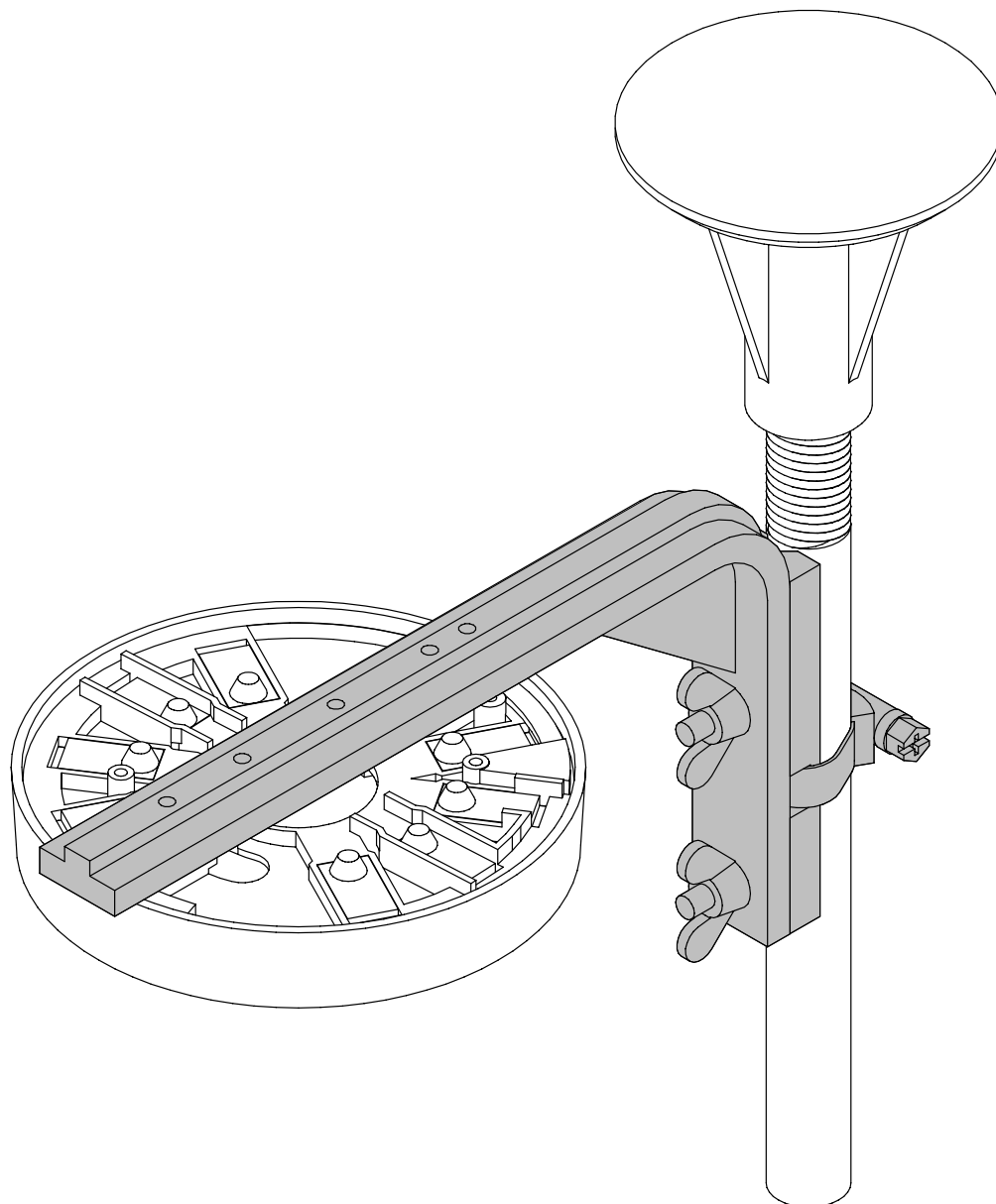
# 1. Product Description

The mounting bracket is used for the installation of automatic point fire detectors in false floors, for example in EDP rooms.

The mounting bracket is mounted with a clamp on the false floor stands.

The detector base is fitted to the mounting bracket with the screws included.

After connecting the detector base and inserting the automatic point fire detector, reliable detection of a fire in a false floor is ensured.



## 2. Features

The mounting bracket is suitable for the following detector bases:

- MS 400 MAGIC.SENS standard detector base
- MS 400 MAGIC.SENS standard detector base with damp room seal
- MSS 3xx/4xx MAGIC.SENS detector base sirens
- NMS 200
- NMS 100 / NMS 100 V
- MS 94
- MS 94 D
- Empty socket MS 94
- Detector base MS 8.1
- Detector base 143 A / 143 AF

## 3. Planning Notes

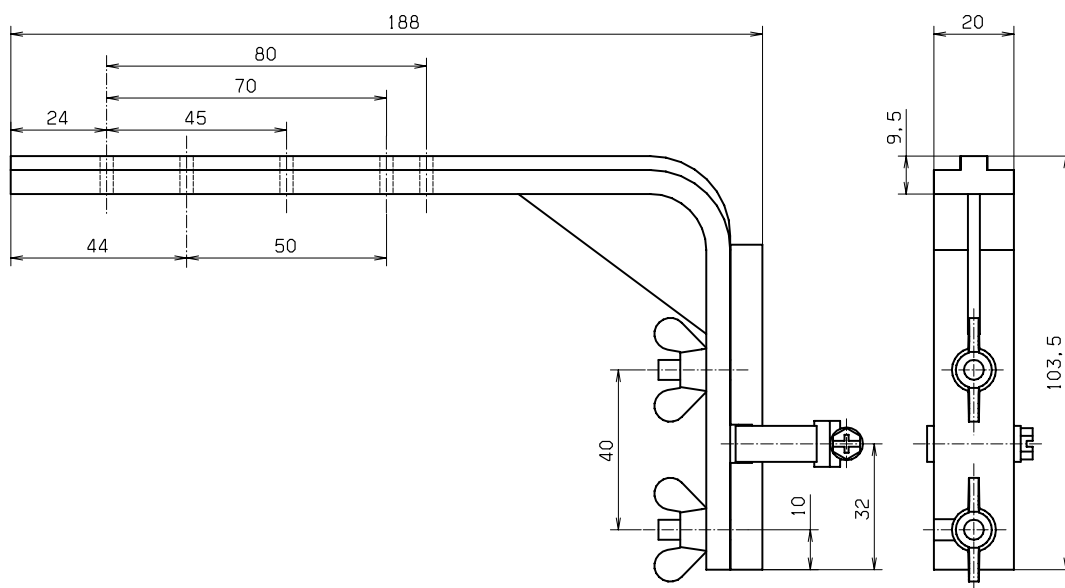
- The mounting bracket clamp has a clamping range of  $\varnothing$  20mm – 32mm.
- The necessary false floor height of 150mm must be taken into account.

## 4. Order contents

Product ID	LE*	Designation
2.799.271.257	ST	Mounting bracket for fire detector on false floor stands, consisting of: – Mounting bracket – 2 mounting clamps – 2 attachment screws for the fire detector base

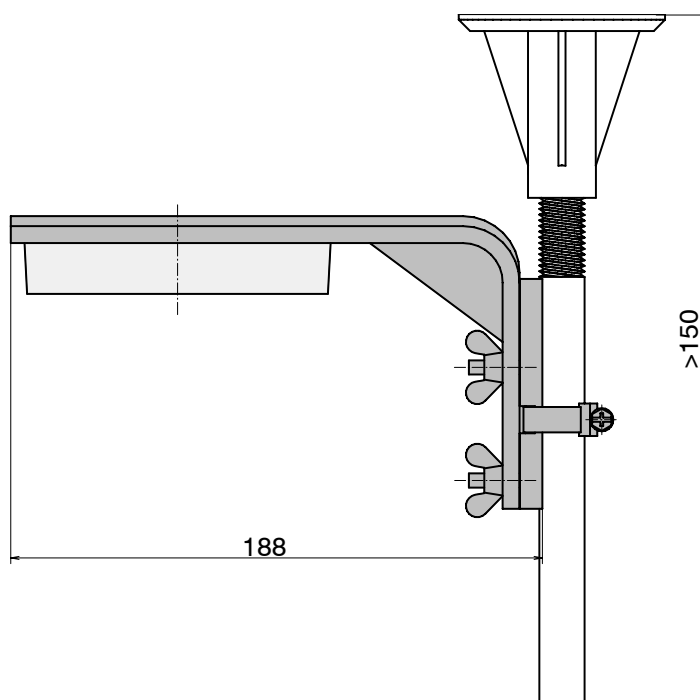
\*LE = Delivery unit, ST = Pieces

## 5. Device structure



## 6. Mounting Tips

- The minimum false floor height of 150mm must be observed.
- The clamp for attaching the mounting bracket to false floor stands has a clamping range of  $\varnothing$  20mm to  $\varnothing$  32mm.
- To attach, the clamp must be opened and placed around the false floor stand.



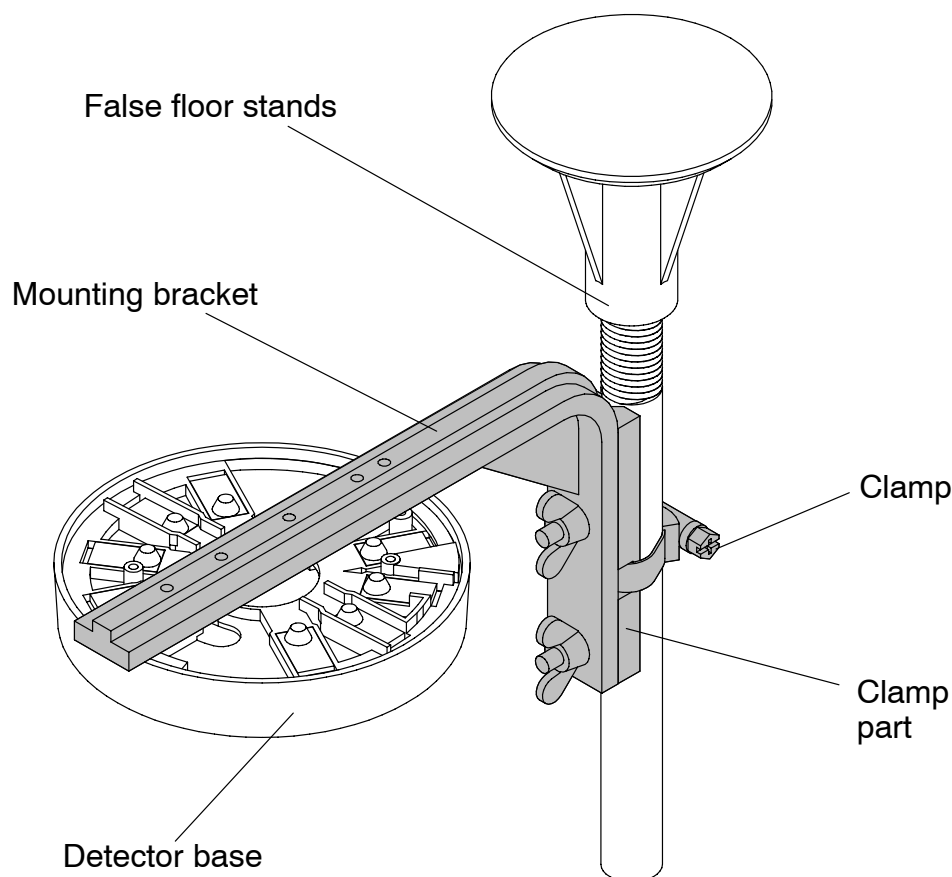
## 7. Notes on maintenance and service

For maintenance and inspection work on security systems, in Germany the regulations of DIN VDE 0833 apply, which refer to the maintenance interval as per the manufacturer's instructions.

- Bosch ST recommends a functional and visual inspection at least once a year.
- Maintenance and inspection work should be carried out regularly and by trained personnel.

To check functioning of the fire detector, both wing nuts are loosened and the bracket swiveled round the upper screw.

After testing, the bracket is swung back into position and the wing nuts tightened.



### 7.1. Repair

**In the event of a defect, the entire mounting bracket is exchanged.**

## 7.2. Disposal

Unusable parts should be disposed of in accordance with regulations.

## 7.3. Additional Documentation



For those with access rights, the Bosch ST ExtraNet at [www.boschsecurity.com/emea/fire](http://www.boschsecurity.com/emea/fire) contains the most up-to-date product information and the installation manual supplied with the device can be downloaded in PDF format.

## 8. Technical specifications (without mounting clamps)

Material	Dorethan BKV 30 H
Weight	90g
Color	black
Dimensions (W x H x D)	188 x 103.5 x 20mm
Ambient temperatures	-25°C . . . +70°C

## 9. Table of Abbreviations

DIN = Deutsches Institut für Normung

VDE = Verband Deutscher Elektrotechniker e.V.

VdS = VdS Schadenverhütung GmbH



**Bosch Security Systems**  
**130 Perinton Parkway**  
**Fairport, New York, 14450,**  
**USA**

**Info-Service**

**Phone: +1 (585) 223 – 4060**

**Fax: +1 (585) 223 – 9180**

**[www.boschsecurity.us](http://www.boschsecurity.us)**

**[security.sales@us.bosch.com](mailto:security.sales@us.bosch.com)**