

Features

- ✧ C-9317 is non-addressable, neither start nor stop occupies address point.
- ✧ It outputs volt-free normally open contact signal can directly control devices like sounder strobe.
- ✧ The contact closes when the start button is pressed, and it's open when the stop button is pressed. Both the start and stop button are self-latched.
- ✧ To avoid mis-operation, the start and stop buttons are protected by a glass cover. When fire occurs, break the glass cover to press corresponding button. The broken glass should be replaced in time.



Description

C-9317 Emergency Gas Override Control is used to control the start and stop of gas extinguishing system. It's usually installed in areas to be protected. When fire occurs, pressing emergency start button, messages can be sent to gas extinguishing control panel, which will give gas extinguishing command and start the solenoid after delay. During the delay time, if the person in field can confirm there is no fire, he could press the emergency stop button.

Operation Principle: Since the connected extinguishing control panel is able to check broken circuit and short circuit, the four states of short circuit, broken circuit, normal and alarm are distinguished by the loop resistance, which is 3kΩ in normal state, and 330Ω and 3kΩ in parallel when the button is pressed. Start output is by pulse mode and stop output is by electric level mode.

Connection and Cabling

Terminals are shown in Fig.1.

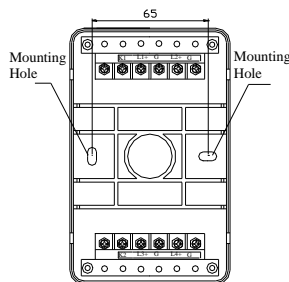


Fig. 1

- ✧ K1, K2: Start passive normally open output.
- ✧ L1+, G: Start input, connected with start output of extinguishing control panel.
- ✧ L2+, G: Start output, to next C-9317 or end of line resistor.
- ✧ L3+, G: Stop input, connected with stop output of extinguishing control panel.
- ✧ L4+, G: Stop output, to next C-9317 or end of line resistor.

Wiring: 1.0mm² or above copper-core cable, subject to local installation codes.

Installation

Warning: Before installing, disconnect the power from the loop and verify that all bases are securely installed and that the wiring polarity is correct at each base.

The base and top cover of C-9317 are plugged together. There is a knockoff hole respectively on the side and bottom of the base. It can be surface mounted and flush mounted. Please note direction when mounting. By surface mounting, the base can be mounted on the embedded box, the mounting hole distance is shown in Fig. 1 and mounting method is shown in Fig.2. For flush mounting, we can use an embedded box, as shown in Fig.3.

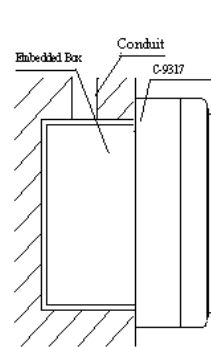


Fig. 2

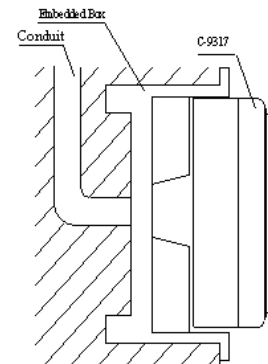


Fig. 3

Application

C-9317 is connected with the extinguishing control panel by three wires. It's also feasible that several C-9317s control one extinguishing cylinder. In this case, the C-9317s should be connected in series, as in Fig.4. Since the extinguishing control panel has the function of checking broken and short circuit of output cables, a 3kΩ terminal resistor should be connected to the end of the wiring.

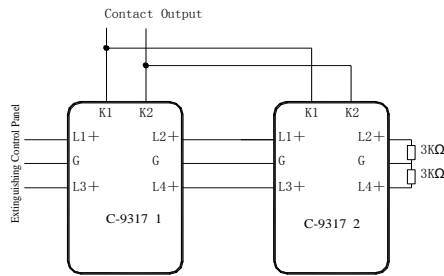


Fig. 4

Testing

Warning: Power up only after all devices are well connected. Remove the glass cover before testing, and put it back after testing.

- (1) Test the unit after installation and at least once a year after it's put into operation.
- (2) Before testing, notify the proper authorities that the system is undergoing maintenance and will temporarily be out of service. Disable the zone or system undergoing maintenance to avoid unwanted alarms.
- (3) Press the start button, corresponding red LED flashes, signals can be sent to the extinguishing control panel, which will give command of extinguishing according to cause and effect settings, and start the extinguishing solenoid after a delay period. During the delay period, press the stop button, corresponding LED is lit, delay is stopped and the extinguishing command is stopped.
- (4) After testing, resume C-9317 using a sucker. Notify the proper authorities the system is back in operation.
- (5) If a C-9317 fails in testing, check its connection and test again. If it still fails, return for repair.

Troubleshooting

- ✧ No alarm: Check whether the LED, button and resistor are in open circuit.
- ✧ Alarming fault: Check whether terminal resistor is well connected.

Caution

- ✧ C-9317 is used to control gas-extinguishing equipment and is supposed to be accessed by trained operator only.
- ✧ Emergency stop button can only stop delay signal.

Specification

Operating Voltage	19VDC
Standby Current	0mA
Alarm Current	< 25mA
Normally-open Output Contact	Rated 60VDC/0.1A, contact resistance $\leq 100\text{m}\Omega$.
Initiating Mode	Pressing the button manually
Type of Initiating Part	Reusable
Resuming Mode	Manually resumed by a special key
Indicators	Start: Red, flashes when the start button is pressed. Stop: Red, illuminates constantly when the stop button is pressed.
Wiring	3-core connection with extinguishing control panel.
Ambient Temperature	$-10^{\circ}\text{C} \sim +50^{\circ}\text{C}$
Relative Humidity	$\leq 95\%$, non-condensing
Dimensions	144mm×90mm×58.5mm
Material and Color of Enclosure	ABS, red
Weight	About 313g(with base)
Mounting Hole Distance	65mm

Limited Warranty

GST warrants that the product will be free from defects in design, materials and workmanship during the warranty period. This warranty shall not apply to any product that is found to have been improperly installed or used in any way not in accordance with the instructions supplied with the product. Anybody, including the agents, distributors or employees, is not in the position to amend the contents of this warranty. Please contact your local distributor for products not covered by this warranty.

This Data Sheet is subject to change without notice. Please contact GST for more information or questions.

Gulf Security Technology Co., Ltd.

No. 80, Changjiang East Road, QETDZ, Qinhuangdao, Hebei, P. R. China 066004

Tel: +86 (0) 335 8502434 Fax: +86 (0) 335 8502532

service.gst@fs.utc.com www.gst.com.cn