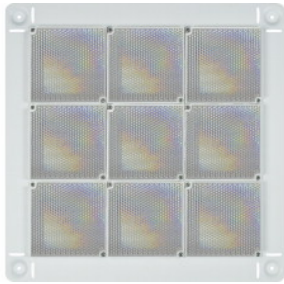



Reflector set for LRMX, for ranges of up to 100 m




Part-No. 761402.10

Metal reflector set for range extension of LRMX up to 100 m.

Range	5 ... 100 m
Dimensions	W: 370 mm H: 370 mm D: 7 mm

 Reflector sets also available on request with water-repellent reflectors Part No. 761413 (nano coating) or additional built-in heating.

 Steel plate; 9 x reflector 761403

Features:

- Motorized detector head
- User-friendly commissioning via automatic self-adjustment
- Disturbance-protected operation via automatic electromechanical tracking of the detector head during building movements
- Optimal access via remote operating unit at eye level
- Clear representation of all states via central indicator display on the operating unit
- High level of IP protection for usage under difficult environmental conditions
- Activation and reset via esserbus transponder 808623 during loop operation
- Ranges from 5 to 100 m
- Large assortment of accessories