

Compact B&W Network Camera

WAT-933

Preliminary

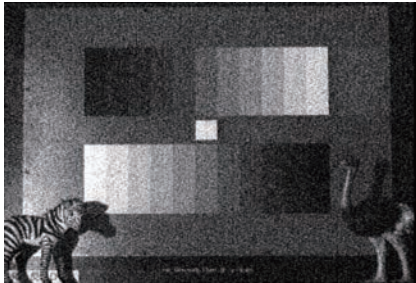
- 1/2.8 inch Full HD BSI CMOS Image Sensor
 - NIR High Sensitivity
- Min. Illumination: 0.0001lx F1.4



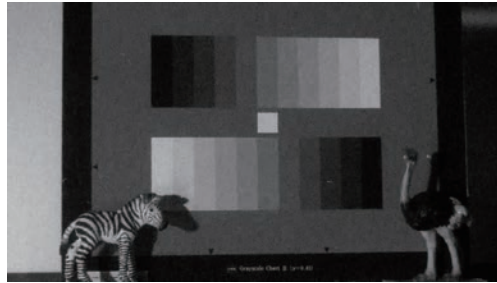
Sensitivity Comparison

*Environment: Illumination 0.2lx

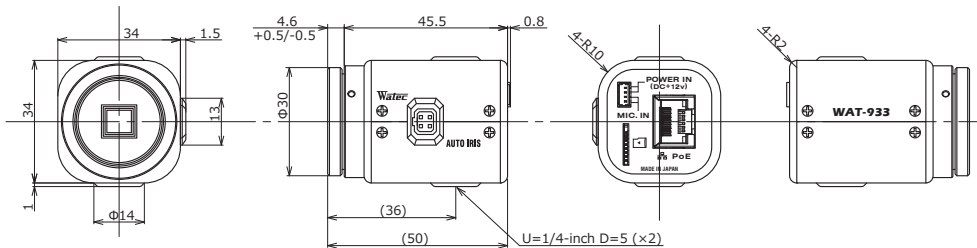
High Sensitivity Analog Camera



WAT-933



Dimensions



Specifications

Pic-up Element	1/2.8 inch BSI CMOS Image Sensor	
Number of Effective Pixels	1945(H) × 1097(V)	
Unit Cell Size	2.9μm(H) × 2.9μm(V)	
Imaging System	—	
Synchronizing System	Internal	
Scanning System	Progressive	
Output Size	1920×1080, 1280×720, 800×600, 704×480, 704×400, 640×480, 640×360, 320×240	
Max. Frame Rate	30 fps	
Video Compression	H.264, MJPG	
Resolution (H)	More than 850TVL (Center)	
Min. Illumination	0.0001 lx F1.4 (AGC HIGH=72dB, Shutter=OFF)	
S/N	TBD	
Function Setting	Browser	
AE Mode	Fixed	1/30, 1/60, 1/120, 1/250, 1/500, 1/1000, 1/2000, 1/4000, 1/8000, 1/15000, 1/30000 (Sec.)
	EI	—
White Balance	ON	1/30 - 1/30000 (Sec.)
	OFF	x32 - 1/30000 (Sec.)
AGC	ON	0 - 72dB (Max:0 - 72dB)
	OFF	0dB
MGC	—	
Day/Night	—	
Gamma Characteristics	γ≈0.45, 0.55, 0.65, 0.75	
Noise Reduction	3DNR OFF/ON Level Adjustable	
Wide Dynamic Range	WDR OFF/ON Level Adjustable	
Lens Iris	DC	
Back Light Compensation	BLC, HSBLC	
White Blemish Correction	ON	
Sharpness	OFF/ON Level Adjustable	
Defog	OFF/ON Level Adjustable	
Digital Zoom	—	
Privacy Mask	16 masks	
Mirror Image	OFF, V-FLIP, H-FLIP, HV-FLIP	
Freeze	—	
Motion Detection	OFF/ON Select from 4 Detection Areas	
Neg. Image	—	
ONVIF	TBD	
Supported Protocols	TCP/IP, UDP/IP, RTP, RTCP, RTSP, SNTP, HTTP, FTP, DHCP, DNS, UPnP	
Interface	RJ45 (10BASE-T, 100BASE-TX)	
	4P Connector (Audio In, Power In), Auto Iris, MicroSD	
Power Supply	PoE +48V, DC+12V±10%	
Power Consumption	TBD / TBD (PoE +48V), 1.62W/135mA (DC+12V)	
Operating Temperature	TBD	
Storage Temperature	-30 - +70°C	
Operating / Storage Humidity	95%RH or Less (without Condensation)	
Lens Mount	CS Mount (Back Focus Adjustable)	
Weight	Approx. 80g	
Accessories	4P Cable, AIC-G(Iris Plug), Hex. Wrench	